

# Round Sling Inspection

## How to inspect before use

Ensure your safety, the safety of your site and teammates when conducting inspections. All inspections of Round slings shall be conducted in accordance with the relevant standards.

### Inspect all the components of the Round Sling thoroughly

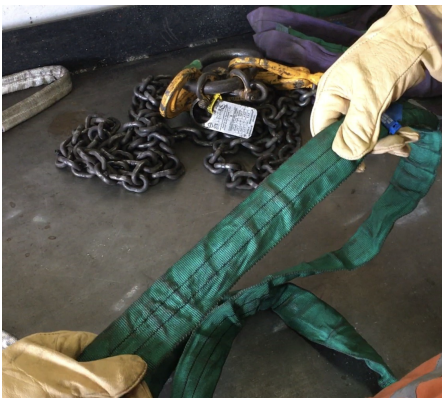
1. Working Load Limit Tag



2. Stitching



3. External Cover



4. Load Bearing Core



## what to look for

Burnt, Chemical Damage, Cut, Damaged Stitching, Distorted, Excess Dirt/Grease, Hardened Fibres, Heat Damage, Holes, Incorrect Colour Tag, Information missing, Internal Fibres Visible, Nicks, Unexplained Lumps, Faded/Colour change, Unreadable, Worn.

**NOTE:** Pay particular attention to the external cover for signs of exposed load fibres.

If any doubt is raised regarding the Round Sling NOT being fit for service, tag accordingly and contact us on 3801 6565.

### HEAD OFFICE

A. 4 Christensen Rd, Yatala Q 4207

T. 07 3801 6565

W. [stenhouselifting.com.au](http://stenhouselifting.com.au)

EAGLE FARM 07 3473 2453

MARYBOROUGH 07 4122 1193

WACOL 07 3728 4545

